

# ARO

242 W 53

## RESIDENCE 23-37F

1 BEDROOM

1 BATH

659 SF / 61 SM

### RESIDENCES

- Large living areas feature high ceilings, oak wood flooring and floor-to-ceiling windows
- Custom kitchen equipped with Caesarstone countertops, glass tile backsplashes, white glass cabinetry and a premium appliance package including GE Microwave and Dishwasher, Fisher Paykel Refrigerator, and Bertazzoni Gas Oven
- Bathrooms include honed Carrara marble floor, custom Dolomiti marble wall tile, floating white vanity with mirror, medicine cabinet with overhead lighting, Toto toilet, Cantrio sink, Hansgrohe fixtures throughout, and Kohler bathtub
- A Bosch washer and dryer is provided in every residence

### AMENITIES

- 24/7 doorman
- Full-service concierge
- 40,000 square feet of indoor and outdoor amenities exclusive to residents
- ARO Club\* amenities include an indoor pool, game room, three distinct lounges, children's playroom, golf simulator, basketball court, epicurean kitchen, fitness center with Yoga/Pilates room, catering kitchen with dining area, and landscaped outdoor terraces
- ARO Sky Club\* premium amenities package includes access to the rooftop pool and a fourth lounge, the ARO Sky Lounge
- WiFi-enabled amenity spaces
- 24/7 attended parking garage

### NEIGHBORHOOD

- Central Midtown location with easy access to any point in New York City with the A, C, E, B, D, F, M, N, Q, R, W, 1 and 2 subway lines as well as multiple bus lines
- Surrounded by iconic destinations including Central Park, Rockefeller Plaza, Lincoln Center, Columbus Circle and Bergdorf Goodman
- Steps from cultural centers like MoMA, The Museum of Arts and Design and Carnegie Hall
- Award-winning and Michelin-starred restaurants Le Bernardin, The Modern, Marea, Per Se, Masa, La Grenouille, Nobu57, and others are a stroll away

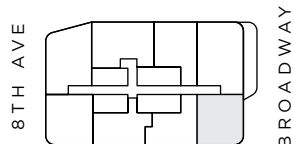
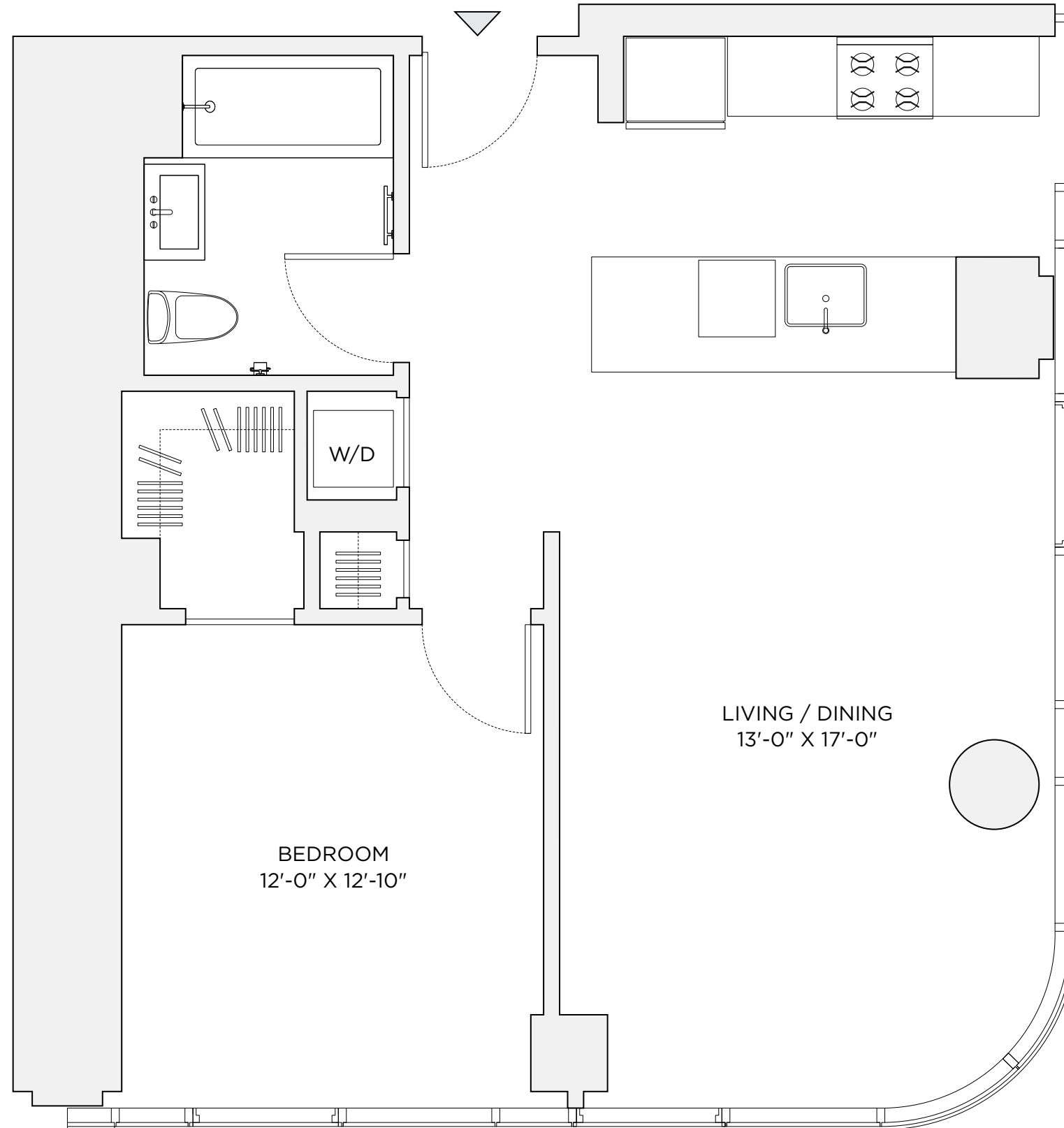
212.481.5353

RENT@ARO.NYC

ALGIN MANAGEMENT TRIUMPH

\*Additional Fees May Apply

No representation is made by Roseland Development Associates LLC, Algin Management Co., LLC or by Triumph Property Group, Ltd., nor is any to be implied, as to the accuracy of the information provided herein, which may contain errors and/or omissions. All dimensions are approximate. For exact dimensions, please hire your own architect or engineer. All offers are subject to change, withdrawal or prior lease at any time and without prior notice.



W 52ND ST